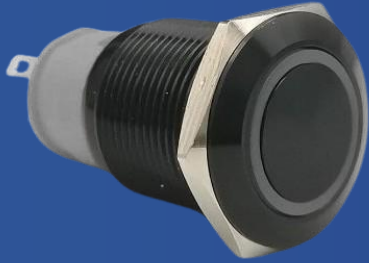


## HIGH CURRENT BLACK STAINLESS STEEL PUSHBUTTON



- Designed for Marine and onshore applications
- 19mm cutout diameter (22mm on request)
- Different LED colors available
- Black Anodised Aluminium housing
- Momentary Off - (On) - Latching Off - On
- IP67 certified
- IP65 Connector available
- CE-certified

Part number: PF19D-00 / PF22D-00

### Specifications

|   |                       |
|---|-----------------------|
| Max. current:                           | 20A                   |
| Supply Voltage:                         | 3.3V / 5V / 12V / 24V |
| Mechanical life:                        | 50.000 cycles         |
| Contact resistance:                     | 50 mΩ                 |
| Insulation resistance:                  | 1000MΩ                |
| Operating temperature:                  | -20 to +55 C          |
| Button travel:                          | 2.50mm                |
| Protection:                             | IP67                  |
| Actuation force:                        | 4Nm                   |
| Output:                                 | NO (Normally Open)    |
| Mounting Nut torque:                    | 5 – 14NM              |
| Type:                                   | Latching or Momentary |
| Material:                               | Anodised Aluminium    |
| <b>LED State for output indication:</b> |                       |
| 1- Always on                            |                       |
| 2- Only on when pressed                 |                       |

### Applications

|                    |   |
|--------------------|---|
| <b>Marine:</b>     | Exterior switch panels<br>Interior control panels<br>Offshore applications      |
| <b>Industrial:</b> | Farming equipment<br>Heavy machinery  |
| <b>On-shore</b>    | RV power distribution panels<br>Car switch panels<br>Kiosks<br>Security devices |

### Part number configurator

Connector



Y – Yes  
N - No

Function



M – Momentary  
L - Latching

LED  
style



W – White  
Y- Yellow  
B – Blue  
G- Green  
R – Red

# HIGH CURRENT BLACK STAINLESS STEEL PUSHBUTTON

